



PLANMAPPE

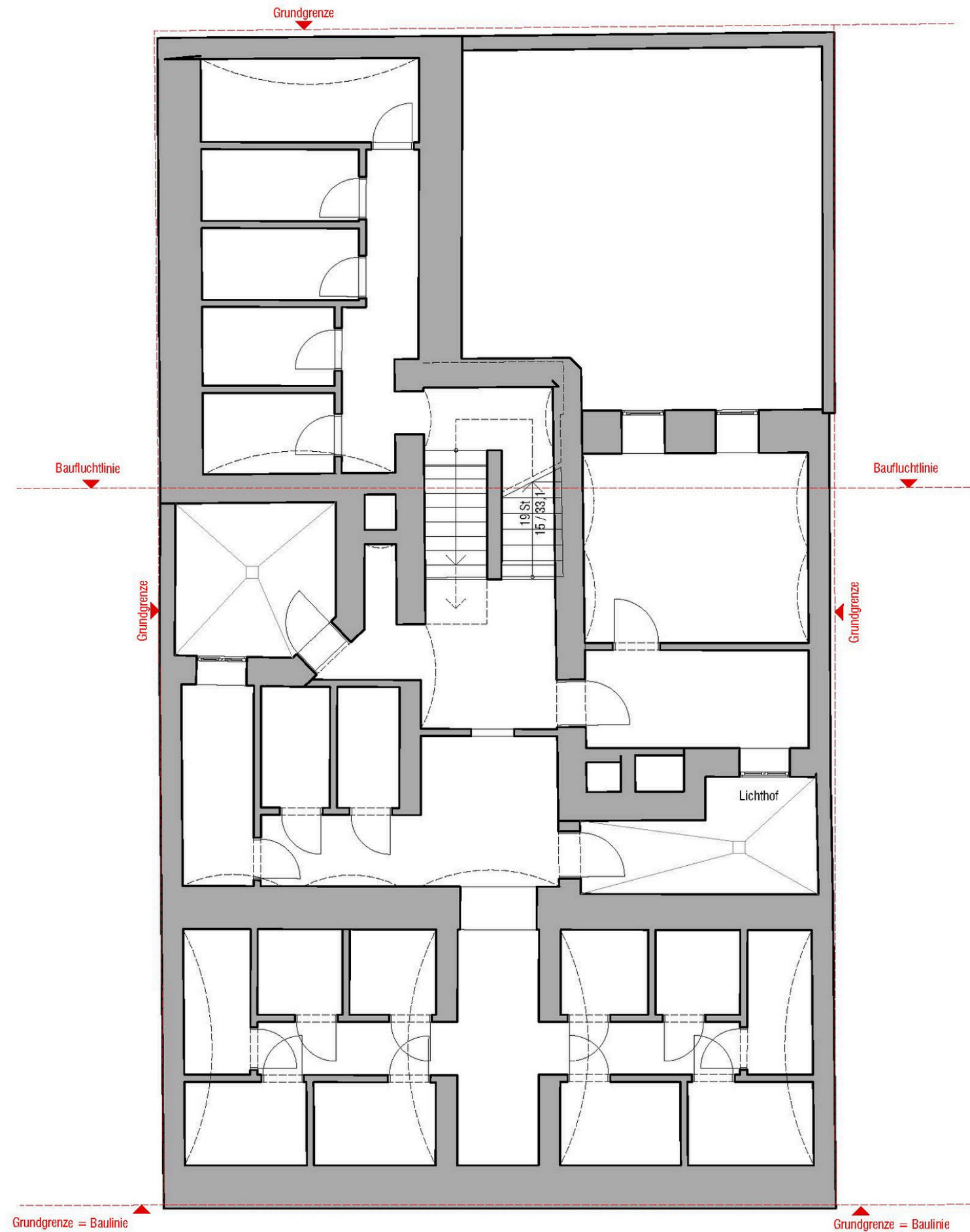
06/2024

LIECHTENSTEINSTRASSE 128 | 1090





UNTERGESCHOSS



MEZZANIN



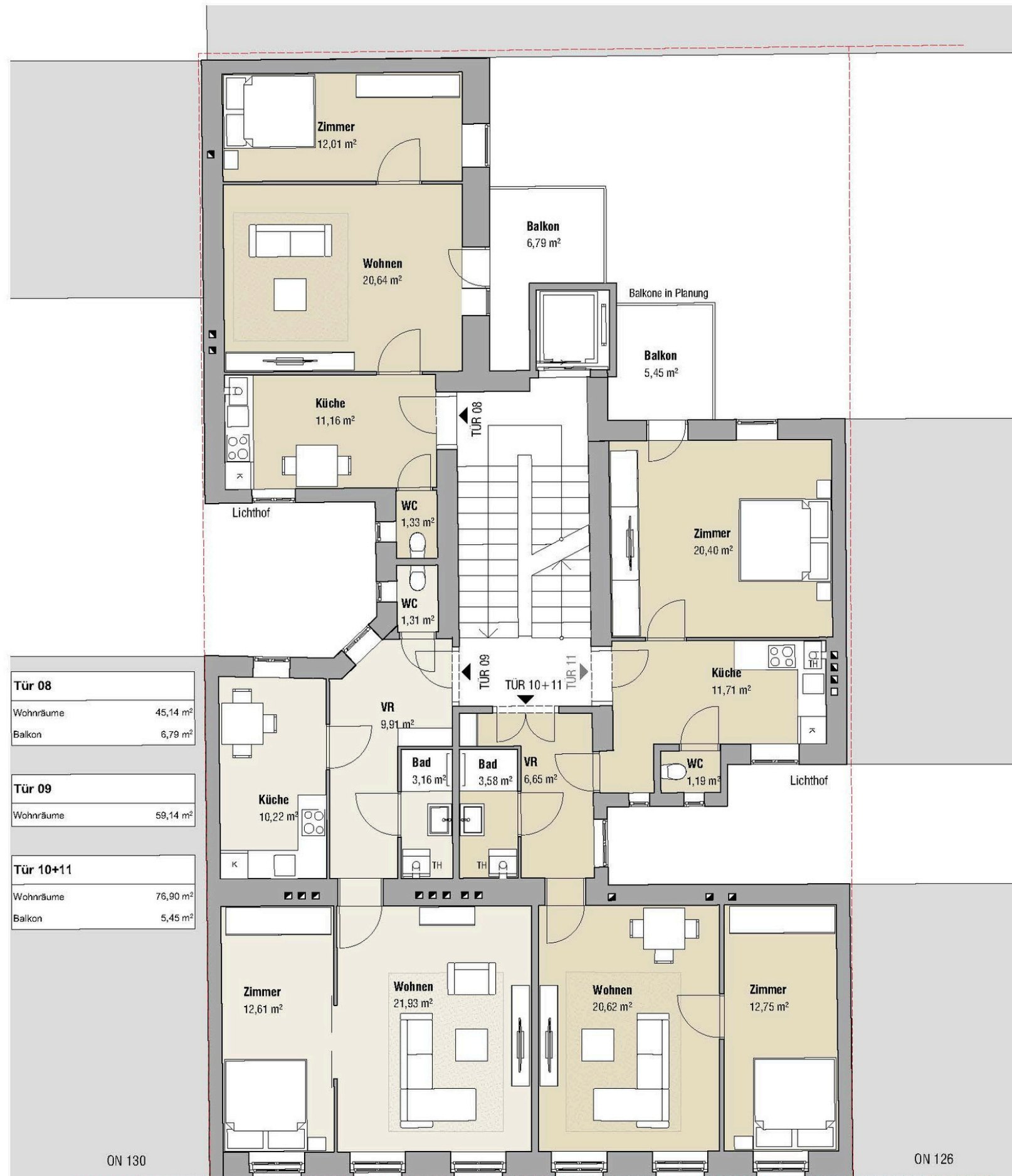
Tür 04	
Wohnräume	44,90 m ²
Balkon	6,79 m ²

Tür 05	
Wohnräume	59,24 m ²

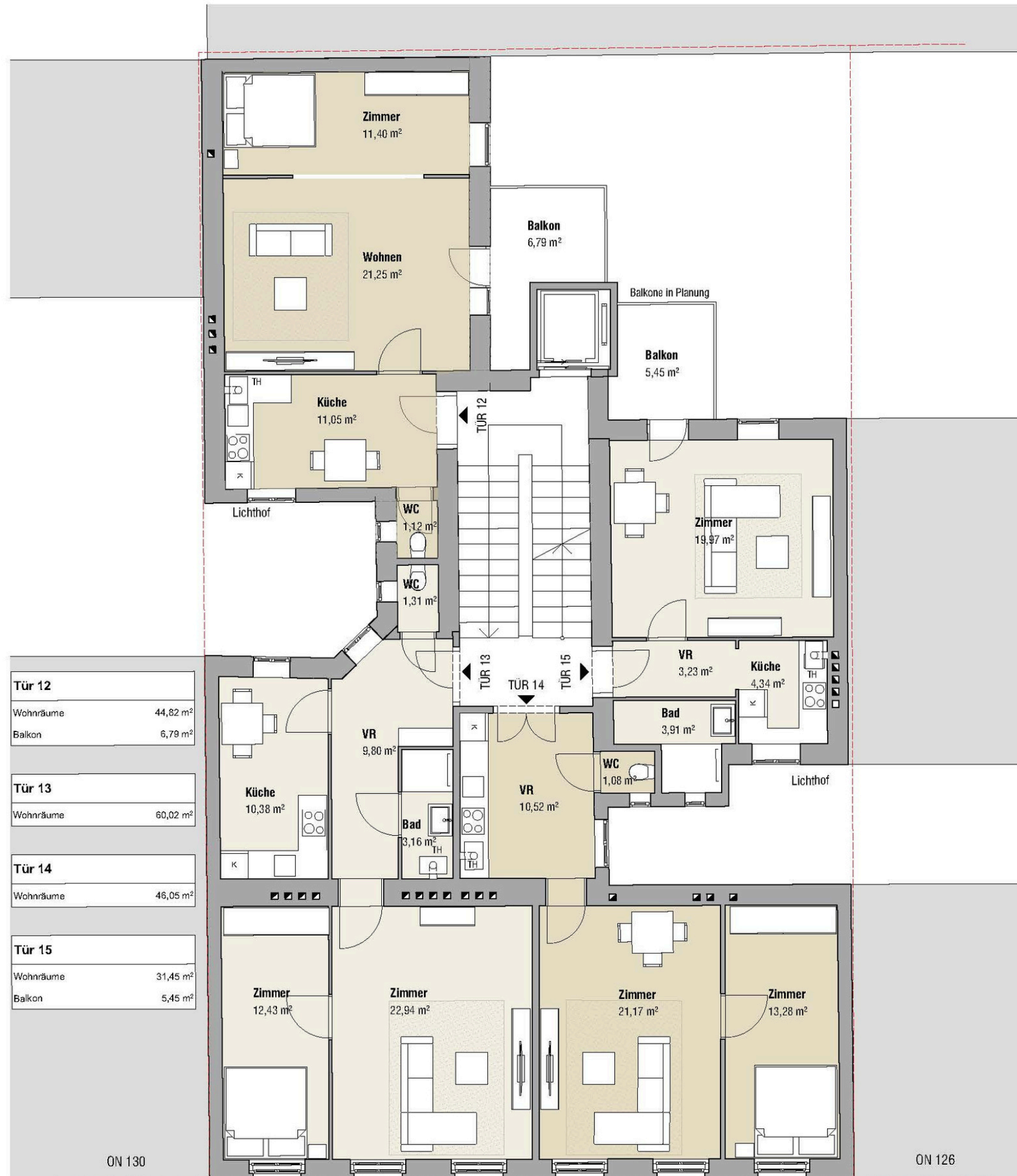
Tür 06	
Wohnräume	45,47 m ²

Tür 07	
Wohnräume	31,08 m ²
Balkon	5,45 m ²

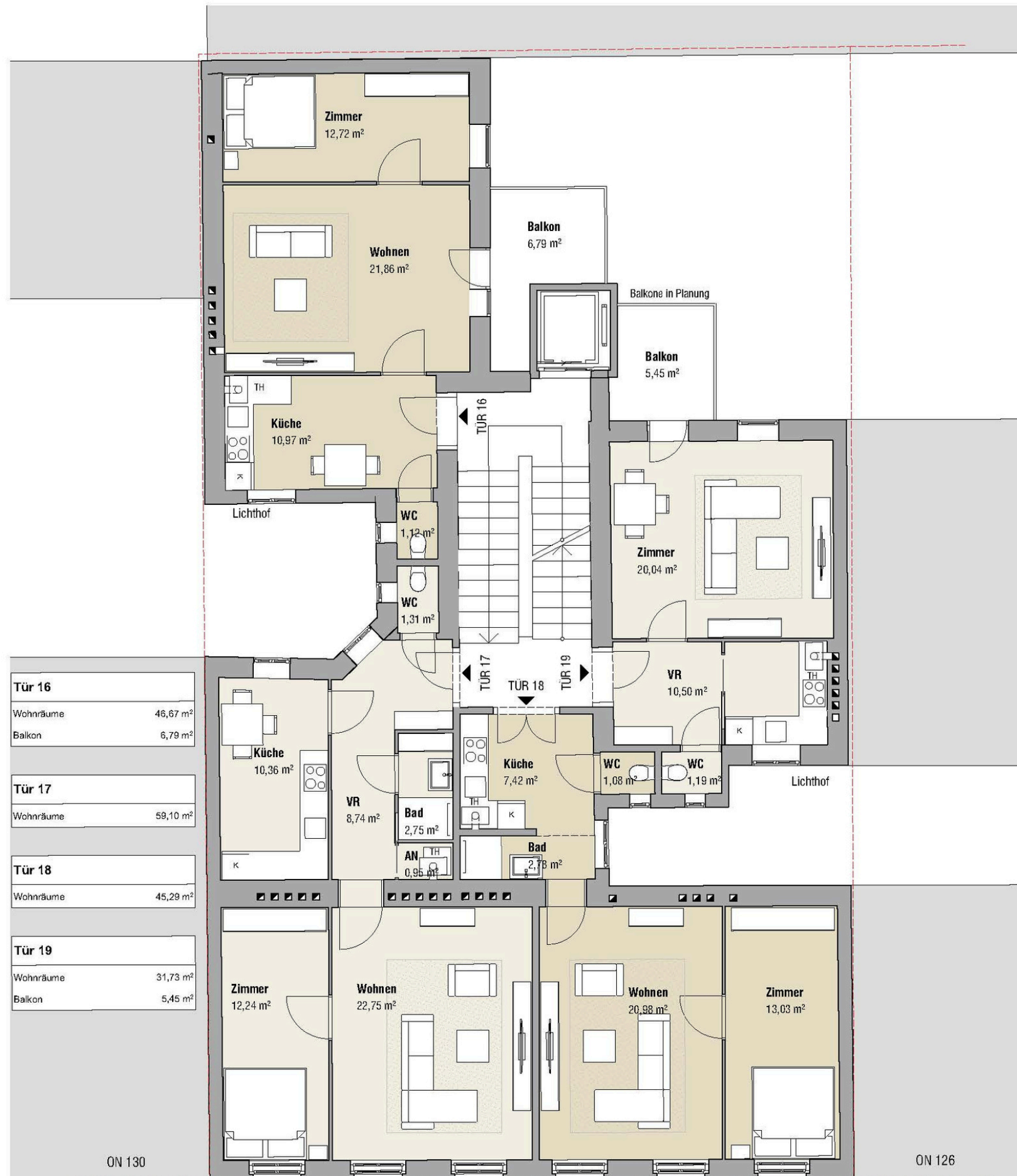
1. OBERGESCHOSS



2. OBERGESCHOSS



3. OBERGESCHOSS



ON 130

ON 126